

RESUME



FRANK LOCKER PhD, AIA, REFP



Honored as Planner of the Year by the Council of Educational Facilities Planners International for his comprehensive planning approach, consensus building process, and state-of-the-art school design, Frank leads clients to position their schools for the long term future through visioning, master planning, educational program development, educational specifications and collaborative concept design. A former educator, trained facilitator, and registered architect, Frank bases his approach on research in effective learning. Frank is a frequent speaker at regional and national educational planning conferences, co-taught the educational planning course at the Harvard University Graduate School of Design, and writes a monthly column for SchoolFacilities.com.

EDUCATION

- University of Edinburgh, PhD, Architecture
- University of Oregon, Bachelor of Architecture
- Miami University
- University of Southern Maine, Certificate in Facilitation

MEMBERSHIP/AWARDS

- CEFPI Planner of the Year, 1999
- Teacher of the Year, College of Architecture and Design, Kansas State University, 1981
- Rotch Traveling Scholarship, 1978
- CEFPI Recognized Educational Facility Planner [REFP], 1998
- Council of Educational Facility Planners International
- American Institute of Architects

REGISTRATIONS/ CERTIFICATIONS

- Registered Architect
- Registered Interior Designer
- NCIDQ

KEYNOTE SPEECHES

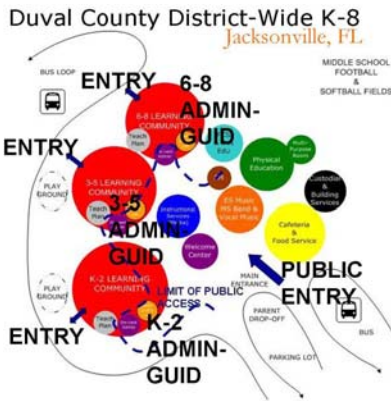
- *Best Practices International Exemplars*, Building Schools Exhibition + Conference Middle East North Africa, Abu Dhabi, UNITED ARAB EMIRATES, December 2009
- *High Performing Learning Places*, VS Furniture America Conference, Tauberbischofsheim, GERMANY, September 2009
- *Transformed Learning Spaces*, Futurelab Research Conference, London, ENGLAND, May 2009
- *21st Century Learning*, CTA Educational Forum, Missoula, MT, February 2009
- *Practices, Process and Places of School Transformation*, BSEC Conference, Manchester, ENGLAND, February 2009
- *Emerging Best Practices*, StudioTalks, Burlington, VT, October 2008
- *High Performing Learning Places*, New England School Development Council (NESDEC), Marlborough, MA, October 2008
- *School Buildings-The State of Affairs*, Swiss Embassy Symposium on School Design, Boston, MA June 2008
- *State School Design Standards: Can't Live with Them; Can't Live without Them*, Council of Educational Facilities Planners (CEFPI), International, Northeast Conference, Albany, NY, April 2008
- *How to Create a Successful Master Plan*, Boston Society of Architects, Boston, MA, February 2008
- *Effective Schools; Innovative Facilities*, Differentiated Learning Through Innovative School Design Conference, Washington, DC, October 2007
- *School Design in the 21st Century*, American Architectural Foundation, National Press Club, Washington, DC, June 2006
- *Linking Student Success to School Facilities*, NESDEC, Marlborough, MA, April 2006
- *School of the Future*, BuildBoston, Boston, MA, November 2005
- *Goldfish and Water*, Council of Educational Facilities Planners International, (CEFPI), Australia Chapter Conference, Brisbane, AU, May 2003
- *Team Teaching and Integrated Learning*, NESDEC, Sturbridge, MA, April 2003
- *Goldfish and Water*, CEFPI, Pacific Northwest Regional Conference, Portland, OR, July 2002
- *Innovation in School Facilities: Planning, Places, + Process*, CEFPI Washington State Chapter Conference, Yakima, WA, March 2001
- *Innovation in School Facilities: Planning, Places, + Process*, CEFPI Midwest Regional Chapter Conference, Kansas City, Spring 2001

CONFERENCE SEMINARS/WORKSHOPS

- *School Transformation + Development Map*, CEFPI International Conference, Washington, DC, September 2009
- *Teaching/Learning Styles and Their Effect on Classroom Design*, National School Supply + Equipment Assn, Baltimore, MD, November 2008
- *Visioning School*, Massachusetts Association of School Superintendents/Massachusetts Association of School Committees Conference, November 2008

RESUME

FRANK LOCKER PhD, AIA, REFP



- *School Transformation + Development Map*, CEFPI International Conference, San Diego, September 2008
- *Progression of School Development*, CEFPI International Conference, Toronto, October 2007
- *The Brits and the Aussies are Way Ahead of Us*, CEFPI International Conference, Toronto, October 2007
- *Great Schools by Design Institute*, American Architectural Foundation, Nashville, October 2007
- *Linking Student Success to School Facilities*, Boston Society of Architects, Cambridge, MA, November 2006
- *Urban School Facilities*, CEFPI International Conference, Phoenix, September 2006
- *Renovate vs Rebuild*, New England School Development Council, Marlborough, MA, April 2006
- *New Wine in Old Bottles*, CEFPI International Conference, San Antonio, Sept 2005
- *Small Schools: Organization, Outcomes, + Cost*, CEFPI International Conference, Atlanta, October 2004
- *Inventing Non-Traditional Collaborative Learning Environments*, CEFPI Northeast Region Conference, Hershey, PA, April 2005
- *Inventing Non-Traditional Collaborative Learning Environments*, CEFPI Northeast Region Conference, Trenton, NJ, April 2004
- *The Art of Stewardship: the Role of the Superintendent During School*, New Jersey Assn of School Administrators, Atlantic City, NJ, 2004
- *Why is Change so Hard?* CEFPI International Conference, Toronto, September 2003
- *Urban Schools*, CEFPI International Conference, Phoenix, October 2002
- *Flexible Schools*, CEFPI International Conference, Phoenix, October 2002
- *Flexible Schools*, Ohio Builds Conference, Columbus, OH, September 2002
- *Integrated Learning/ Team Teaching*, Ohio Builds Conference, Columbus, OH, September 2002
- *Integrated Learning/ Team Teaching*, CEFPI Pacific Northwest Regional Conference, Portland, OR, July 2002
- *Educational Specifications*, New England School Development Council (NESDEC) Conference, Sturbridge, MA, April 2002.
- *Urban Schools*, CEFPI Northeast Region Conference, Newport, RI, April 2002.
- *Innovative Learning Places*, National School Supply & Equipment Association, Tampa, February 2002
- *Integrated Learning and Team Teaching*, CEFPI Washington State Chapter Conference, Seattle, October 2001
- *Integrated Learning and Team Teaching*, CEFPI Alaska State Chapter Conference, Anchorage, December 2001
- *Innovation in School Facilities: Planning, Places, and Process*, CEFPI Northeast Regional Chapter Conference, Cornell University, Spring 2000

PUBLICATIONS

- *Innovative Schools In Britain, Australia, and the Cayman Islands*, Educational Facility Planner, Vol. 42, issues 2 +3, Council of Educational Facilities Planners, International
- *Monthly Columnist*, SchoolFacilities.com, Spring 2007+
- *Passive Security in Schools*, School Planning & Management, November 2006
- *When Large is Small: Schools Within Schools*, American School Board Journal, October 2006
- *Flexible Facilities*, Design Share, September 2003
- *Flexible Facilities*, Educational Facility Planner, Vol. 38, Issue 5

DESIGN ADJUDICATION

- *K-12 Design Awards*, Boston Society of Architects, 2009
- *Design Awards*, DesignShare/School Construction News, 2007, 2006, 2005, 2000
- *Planner of the Year Awards*, CEFPI, 2002, 2001, 2000
- *Design Awards*, CEFPI Pacific Northwest Region, July 2002
- *Design Awards*, CEFPI Alaska Region, December 2001
- *James D. MacConnell Award*, CEFPI, 2001
- *National Council of Interior Design Qualification*, National Exam, 1997

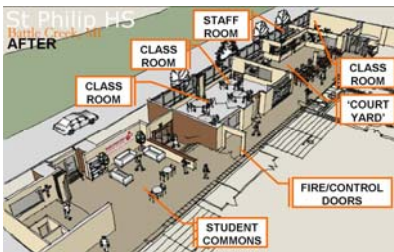
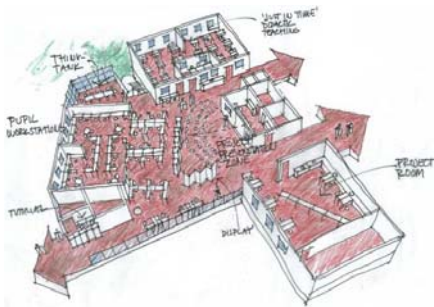


TEACHING EXPERIENCE

- ❑ **Harvard University, Graduate School of Design Executive Program**
Summer 2006, 2005, 2004, 2003
- ❑ **Kansas State University, Manhattan, KS**
Instructor, 1975-1981
- ❑ **Edinburgh University, Edinburgh, Scotland**
Teaching Assistant, 1978-1980
- ❑ **Boston Architectural College, Boston, MA**
Instructor, 1972-1975

CURRENT PROJECTS

- ❑ **Vancouver School Board, Vancouver, British Columbia, CANADA**
Educational Planning for Acadia Road K-8 School
- ❑ **National University of Rwanda, Butare, RWANDA**
Space needs brief for major university expansion
- ❑ **Grand Rapids Christian Schools, Grand Rapids, MI**
Visioning for the high school and middle school
- ❑ **Kainon School, Westville, SOUTH AFRICA**
Consultation on educational practices and facilities design
- ❑ **Bedford Public Schools, Bedford, MA**
Space use evaluation of elementary and middle schools
- ❑ **School District #43, Coquitlam, British Columbia, CANADA,**
Centennial High School Visioning
- ❑ **Duxbury Public Schools, Duxbury, MA**
Visioning for the high school and middle school
- ❑ **Uinta 1 School District, Evanston, WY**
Horizon Alternative School Visioning + Educational Specifications
- ❑ **Cuckoo Hall Primary School, Enfield, ENGLAND**
Educational Visioning
- ❑ **Middletown Public Schools, Middletown, RI***
K-12 District Visioning + Master Planning



RECENT PROJECTS

- ❑ **Corvallis School District #1, Corvallis, OR**
Master Plan update
- ❑ **Easthampton Public Schools, Easthampton, MA**
Easthampton High School Visioning, Educational Specifications + Collaborative Concept Design
- ❑ **School District #43, Coquitlam, British Columbia, CANADA**
District-wide visioning
- ❑ **Southbridge Public Schools, Southbridge, MA**
Southbridge High School + Mary Wells Middle School Educational Planning, Educational Specifications + Collaborative Concept Design
- ❑ **Concord-Carlisle regional School District, Concord, MA**
Visioning workshop
- ❑ **Longmeadow Public Schools, Longmeadow, MA**
Longmeadow High School Visioning
- ❑ **Maynard Public Schools, Maynard, MA**
Visioning for high school and middle school
- ❑ **Hull Future Learning Centre, Hull, UNITED KINGDOM**
Research and demonstration learning centre
- ❑ **Missoula County Public Schools, Missoula, MT**
District-wide educational appropriateness facilities evaluation
- ❑ **North Somerset Local Authority, Weston-super-Mare, UNITED KINGDOM**
Educational planning workshop
- ❑ **Todd County School District, Mission, SD**
Educational Visioning + Educational Specifications for new high/career tech school
- ❑ **Syracuse, NY City School District**
Educational Specifications for six schools grades PK through 12
- ❑ **Sweetwater 1 School District, Rock Springs, WY**
Educational Visioning, Specifications, and Design Charrette for 5-6 school
- ❑ **Wayland High School, Wayland, MA**
Visioning + Educational Specifications

RESUME

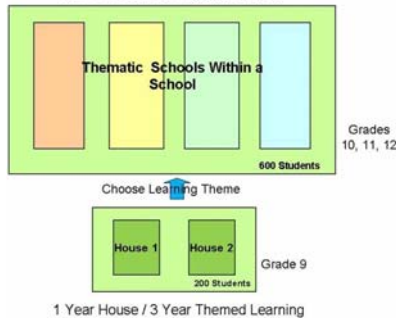
FRANK LOCKER PhD, AIA, REFP



C 1a
22 April 09



HHS School Organization



- ❑ **Frenchtown Jr/Sr High School, Frenchtown, MT**
Educational Commissioning
- ❑ **East Bay Met School, Newport, RI**
Visioning + Educational Specifications
- ❑ **Grand Rapids, MI Christian Schools**
Elementary School Consolidation Visioning
- ❑ **Northwood School District, Northwood, NH**
Facility and Operations Planning Study
- ❑ **Sanford, ME School Department**
Great Works + Sanford High School Visioning
- ❑ **Sweetwater 1 School District, Rock Springs, WY**
White Mountain Junior High School Educational Specifications
- ❑ **Hanover, MA School District**
Educational Visioning + Specs, Collaborative Concept Design for new high school
- ❑ **Burlington, VT School District**
Vision + Master Plan for Excellence, Equity + 21st Century Buildings
- ❑ **Boston, MA Public Schools**
Educational Feasibility Study for John D O'Bryant School of Mathematics + Science
- ❑ **Lower Kuskokwim School District, Bethel, AK**
Concept design for 5 PK-12 schools in Native American villages
- ❑ **Pittsfield Public Schools, Pittsfield, MA**
High School Visioning and Consolidation Study
- ❑ **London Borough of Newham BSF Schools, England**
Educational Planning and Design Consultation on 4 secondary schools
- ❑ **South Burlington, VT School District**
K-12 District Visioning and Master Planning
- ❑ **Sublette County #1 School District, Pinedale, WY**
K-12 Operational and Facilities Analysis
- ❑ **Corvallis, MT, School District #1**
K-12 District Visioning and Master Planning
- ❑ **Mt Blue HS and Foster Technical Center, Farmington, ME**
Visioning
- ❑ **Barnsley Metropolitan Borough, England**
Educational planning and design consultation on 4 secondary schools
- ❑ **Kent County BSF Schools, England**
Educational planning and design consultation on 5 secondary schools
- ❑ **Lakeview School District, Battle Creek, MI**
District Elementary School Visioning and Master Planning
- ❑ **Machias, ME, High School**
Visioning, Program Development, and Concept Design
- ❑ **Beringia Museum of Culture & Science, Nome, AK**
Workshop Facilitation
- ❑ **Battle Creek Area Catholic Schools, Battle Creek, MI**
Program Development
- ❑ **Stillwater Christian High School, Kalispell, MT**
Facility Design Consultation

ARCHIVED PROJECTS

- ❑ **Providence, RI, School Department****
District Master Plan Community Relations
- ❑ **Wellesley, MA, School Department****
Wellesley HS Educational Specifications
- ❑ **Department of Education, Cayman Islands***
System-Wide Master Planning
- ❑ **Ida Crown Jewish Academy, Chicago, IL***
Educational Specifications Reconciliation
- ❑ **Sweetwater 1 School District, Rock Springs, WY**
K-4, 5-6, 7-8 Feasibility Studies & Special Needs Visioning
- ❑ **Sweetwater 2 School District, Green River, WY**
Granger Elementary School Consolidation Facilitation

* Consultation to Fielding Nair International

** Consultation to DeJONG



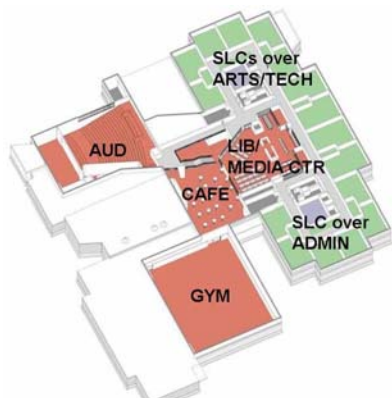
EDUCATIONAL PLANNING EXPERIENCE, DeJONG

- ❑ **Massachusetts School Building Authority, Boston, MA**
Future Oriented Space Standards
- ❑ **Providence, RI, School Department**
District Master Plan
- ❑ **Newton, MA, School Department**
Newton North Educational Specifications
- ❑ **Battle Creek Area Catholic Schools, Battle Creek, MI**
St Philip High School Visioning, Program Development and Ed Specs
- ❑ **Haines Borough School District, Haines, AK**
Design and Ed Specs, K-12 school
- ❑ **Morris Thompson Cultural and Visitors Center, Fairbanks, AK**
Design Workshop
- ❑ **Fairbanks Borough Public Library, Fairbanks, AK**
Master Plan
- ❑ **Frenchtown, MT School District**
District Master Plan
- ❑ **Seacoast Science Center, Rye, NH**
Visioning and Design Workshop
- ❑ **Uinta 1 School District, Evanston, WY**
District Master Plan
- ❑ **Uinta 4 School District, Mountain View, WY**
District Master Plan
- ❑ **Uinta 6 School District, Lyman, WY**
District Master Plan
- ❑ **Carbon 2 School District, Saratoga, WY**
District Master Plan
- ❑ **Sweetwater 1 School District, Rock Springs, WY**
District Master Plan
- ❑ **Sweetwater 2 School District, Green River, WY**
District Master Plan
- ❑ **DuVal County Public Schools, Jacksonville, FL**
K-8 Educational Specifications
High School Educational Specifications
- ❑ **Grand Rapids, MI, Public Schools**
Middle School Educational Specifications
- ❑ **Kalispell, MT, School District**
Glacier HS Visioning
- ❑ **North Star-Fairbanks School District, AK**
Denali and Nordale Elementary Schools Ed Specs & Schematic Design
- ❑ **University of Alaska-Fairbanks, AK**
Tanana Valley Campus Programming & Master Plan
- ❑ **Concord School District, NH**
District Elementary Master Plan
- ❑ **Ministry of Defense, Kuwait**
Military University
- ❑ **Orange County Public Schools, FL**
District Master Plan
Unitary Status Analysis
High Performing High Schools Initiative
- ❑ **Bridgeport Public Schools, CT**
District Facility Master Plan
K-8; 9-12 District-Wide Educational Specifications
New Magnet High School Educational Specifications
- ❑ **Waterbury Public Schools, CT**
District Visioning
- ❑ **School City of Hammond, IN**
High School Educational Specifications
Two Elementary School Educational Specifications and Design Concepts
- ❑ **Manchester-Essex School District, Manchester-by-the-Sea, MA**
High School Visioning
- ❑ **Cedar Springs School District, MI**
Cedar Springs Middle School Visioning
- ❑ **Lakeview School District, Battle Creek, MI**
High School Visioning

RESUME

FRANK LOCKER PhD, AIA, REFP

- ❑ **Hampton Bays Public Schools, NY**
Elementary, Middle, and High School Ed Specs
- ❑ **Manhasset Public Schools, NY**
Education-Based Facility Plan
- ❑ **Southampton Public Schools, NY**
Early Childhood Center Ed Specs
- ❑ **Catholic Schools of Kalamazoo, MI**
Middle School Visioning
- ❑ **Beaufort County Schools, SC**
District Office Space Needs
- ❑ **Montgomery County Public Schools, VA**
District Facility Plan
- ❑ **Edmonds School District 15, Lynwood, WA**
Lynwood High School Visioning
Scriber Lake High School Visioning



EDUCATIONAL PLANNING EXPERIENCE, PDT Architects

- ❑ **Georgetown School District, MA**
Utilization Analysis
- ❑ **Hanover School Department, MA**
Sylvester Elementary School and High School Space Needs
- ❑ **King Philip Regional School District, Wrentham, MA**
King Philip Middle School and High School Space Needs
- ❑ **Franklin County Technical Center, Turner's Falls, MA**
Visioning and Educational Specifications
- ❑ **Wayland School Department, MA**
Wayland High School Visioning
- ❑ **Webster Public Schools, MA**
AJ Sitkowski Elementary School Space Needs
- ❑ **Augusta School Department, ME**
Cony High School Visioning & Funding Application
- ❑ **Falmouth School Department, ME**
Elementary School Facility Plan
- ❑ **Kennebec Valley Technical College, Fairfield, ME**
Campus Plan
King Hall Programming and Educational Specifications
- ❑ **Gorham School Department, ME**
Gorham Middle School Visioning and Space Needs
- ❑ **MSAD #29, Houlton, ME**
Middle School/High School Facility Plan and Funding Application
- ❑ **MSAU #87, Orono, ME**
K-12 Facility Plan
- ❑ **Old Town School Department, ME**
Old Town Elementary School Visioning and Space Needs
- ❑ **MSAD #17, S Paris, ME**
Oxford Hills Comprehensive High School Visioning, Educational Specifications and Design
- ❑ **South Portland School Department, ME**
Elementary School Facility Plan
- ❑ **Scarborough School Department, ME**
K-12 Facility Plan and Funding Application
- ❑ **Yarmouth School Department, ME**
Rowe Elementary School Visioning and Educational Specifications
Yarmouth High School Visioning and Educational Specifications
- ❑ **Barnstead School Department, NH**
Barnstead High/Middle School Visioning and Educational Specifications
- ❑ **Lincoln School, Providence, RI**
Middle School/High School Visioning and Educational Specifications
- ❑ **Wilmington School District, VT**
High/Middle School Space Needs
- ❑ **Hampden-Wilbraham Regional School District, Wilbraham, MA**
Minnechaug High School Visioning

